



## SCHEDA TECNICA

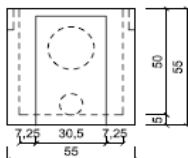
POZZETTO SIFONATO 45X45 INTERNO 55X55 ESTERNO H 55

POZZETTI IN CEMENTO VIBRATO

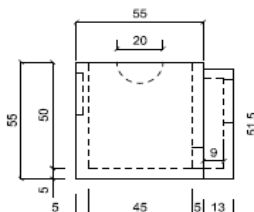


NORMA DI RIFERIMENTO UNI EN 1917:2004

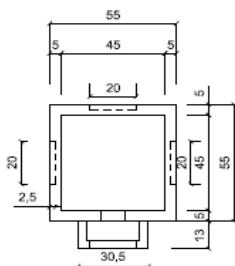
vista frontale  
scala 1:20



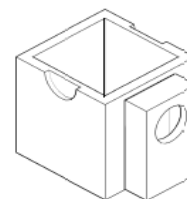
vista laterale  
scala 1:20



Pianta  
scala 1:20



vista 3D



Pozzetto sifonato monolitico  
55 x 55 h 55

### CARATTERISTICHE IMBALLO

QUANTITA' PER BANCALE

SFUSO

### DATI TECNICI

PESO

KG

195

CLASSE DI RESISTENZA CALCESTRUZZO

N/mm<sup>2</sup>

C32/40

SCHEDA N. POZSIF55

DATA 29/12/2011

MOD. S823M

REVISIONE

N°1 DEL 07/12/2020

F.LLI VACIS srl Via Dante Alighieri, 13 24050 COVO BG

Tel 036393167 Fax 0363938688

www.vacissrl.it - info: vacissrl@vacissrl.it