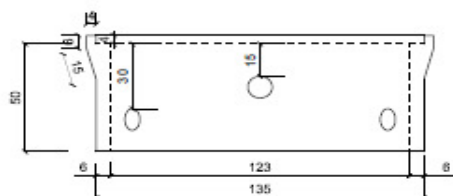
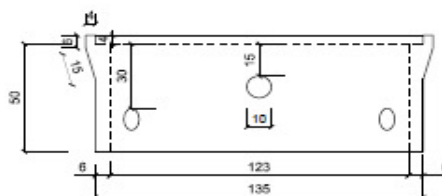


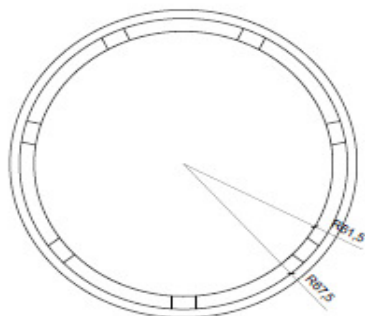
vista frontale
scala 1:20



vista laterale
scala 1:20



Pianta
scala 1:20



vista 3D



**Anello perdente con inc.
bicchiere dn125 - 7 fori d.10**

DIMENSIONAMENTO

DN INTERNO	DN ESTERNO	ALTEZZA	CAPACITA' UTILE LT	PESO KG	N. FORI	DN FORI
125	135	50	330	340	7	10

SCHEDA N. ANPER125 DATA 29/12/2011 MOD. S823M REVISIONE N° 0 DEL 15/02/17

F.LLI VACIS srl Via Dante Alighieri, 13 24050 COVO BG

Tel 036393167 Fax 0363938688

www.vacissrl.it - info: vacissrl@vacissrl.it