



F.LLI VACIS
G R O U P

SCHEDA TECNICA

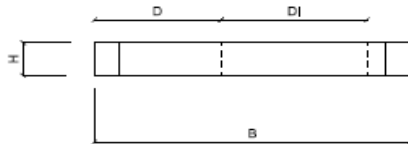
SOLETTA CARRABILE 100X100 I^A CATEGORIA CON FORO CENTRALE DN 60

MANUFATTI IN CEMENTO VIBRATO

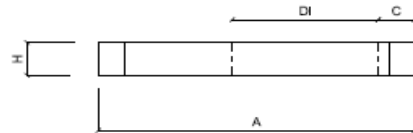


NORMA DI RIFERIMENTO UNI EN 1917

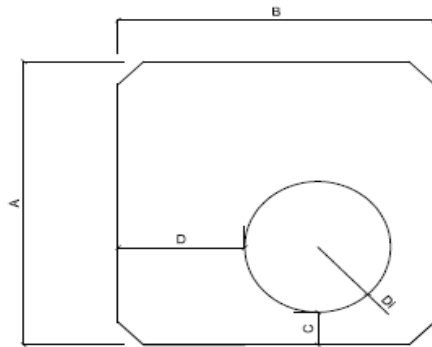
vista frontale
scala 1:20



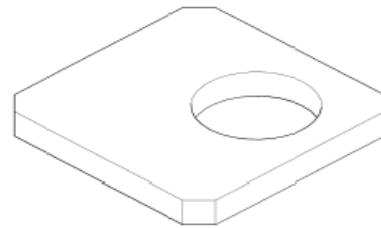
vista laterale
scala 1:20



Pianta
scala 1:20



vista 3D



Soletta car foro circolare
tipo

| A | B | C | D | DI |
|-----|-----|----|----|----|
| 100 | 100 | 20 | 20 | 60 |

CARATTERISTICHE IMBALLO

QUANTITA' PER BANCALE

SFUSO

DATI TECNICI

PESO

KG

480

CLASSE DI RESISTENZA CALCESTRUZZO N/mm²

I^A CATEGORIA

SCHEDA N. SOL100FCC

DATA 10/11/2016

MOD. S823M

REVISIONE

N° 1 DEL 15/04/21

F.LLI VACIS srl Via Dante Alighieri, 13 24050 COVO BG

Tel 036393167 Fax 0363938688

www.vacissrl.it - info: vacissrl@vacissrl.it

