



F.LLI VACIS
G R O U P

SCHEDA TECNICA

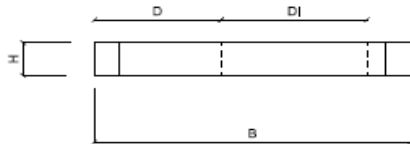
SOLETTA CARRABILE 100X100 CON FORO CENTRALE DN 60

MANUFATTI IN CEMENTO VIBRATO

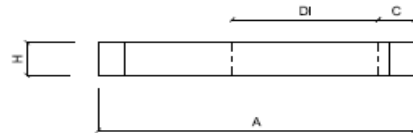


NORMA DI RIFERIMENTO UNI EN 1917

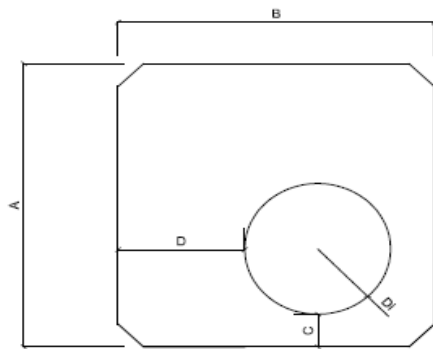
vista frontale
scala 1:20



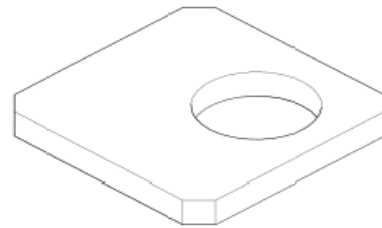
vista laterale
scala 1:20



Pianta
scala 1:20



vista 3D



Soletta car foro circolare
tipo

A	B	C	D	DI
100	100	20	20	60

CARATTERISTICHE IMBALLO

QUANTITA' PER BANCALE

SFUSO

DATI TECNICI

PESO **KG** 450

CLASSE DI RESISTENZA CALCESTRUZZO **N/mm²** **C32/40**

SCHEDA N. SOL100FCC DATA 10/11/2016 MOD. S823M REVISIONE N° 1 DEL 15/04/21

F.LLI VACIS srl Via Dante Alighieri, 13 24050 COVO BG

Tel 036393167 Fax 0363938688

www.vacissrl.it - info: vacissrl@vacissrl.it

